



**In Every Way...**

**You Always**

**Save Money with**

**Guaranteed-To-Live**

**TREES from MAINE**

WHOLESALE  
PRICE  
LIST

FALL  
1954



**WESTERN MAINE  
FOREST NURSERY CO.  
FRYEBURG, MAINE**



# THESE HEALTHY TRANSPLANTS

are **GUARANTEED** to **SATISFY OUR CUSTOMERS!**

## WHOLESALE PRICE LIST - FALL 1954

	Per 1000
<b>AMERICAN ARBORVITAE</b>	
4-yr. Transplants (2-2) 4- 8 in.	\$65.00
<b>BALSAM FIR</b>	
4-yr. Transplants (2-2) 4- 6 in.	65.00
<b>DOUGLAS FIR</b>	
4-yr. Transplants (2-2) 5- 8 in.	65.00
<b>EUROPEAN LARCH</b>	
3-yr. Transplants (2-1) 5-12 in.	50.00
<b>AUSTRIAN PINE</b>	
4-yr. Transplants (2-2) 5-10 in.	65.00
3-yr. Transplants (2-1) 3- 5 in.	50.00
<b>JAPANESE BLACK PINE</b>	
3-yr. Transplants (2-1) 3- 6 in.	50.00
<b>SCOTCH PINE</b>	
4-yr. Transplants (2-2) 5-10 in.	60.00

### TRANSPLANTING INFORMATION

The figures 2-1, 2-2, shown above, represent the number of years the trees have been in seed beds, number of years in transplant beds, and the number of times transplanted. The first figure indicates the number of years the trees remained in the seed bed before being transplanted. The second figure indicates the number of years the trees remained in the transplant bed. The total of the figures indicates the age of the tree, and each dash represents one transplanting. The total of the figures add up to the age of the tree. Thus, a 2-2 Balsam Fir is a 4-year old tree which remained in the seed bed two years, was transplanted, and remained in the transplant bed two years.



White Spruce

	Per 1000
<b>RED PINE</b>	
5-yr. Transplants (2-3) 8-15 in.	\$75.00
4-yr. Transplants (2-2) 4-10 in.	65.00
3-yr. Transplants (2-1) 3- 5 in.	50.00
<b>BLACK HILL SPRUCE</b>	
5-yr. Transplants (2-3) 5-10 in.	70.00
<b>COLORADO BLUE SPRUCE</b>	
5-yr. Transplants (2-3) 5-10 in.	110.00
<b>ENGLEMANN BLUE SPRUCE</b>	
4-yr. Transplants (2-2) 3- 5 in.	70.00
<b>NORWAY SPRUCE</b>	
5-yr. Transplants (2-3) 6-10 in.	75.00
4-yr. Transplants (2-2) 4- 8 in.	60.00
<b>WHITE SPRUCE</b>	
5-yr. Transplants (2-3) 8-15 in.	75.00
3-yr. Transplants (2-1) 3- 5 in.	50.00

### SEEDLINGS

(Not Guaranteed)

We take every precaution in digging, packing and shipping our seedlings so that losses, if any, will be reduced to a minimum.

	Per 1000
<b>AUSTRIAN PINE</b>	
3-yr. Seedlings (3-0) 5-10 in.	\$30.00
<b>RED PINE</b>	
3-yr. Seedlings (3-0) 5- 8 in.	25.00
<b>SCOTCH PINE</b>	
3-yr. Seedlings (3-0) 8-10 in.	30.00
<b>*WHITE PINE</b>	
3-yr. Seedlings (3-0) 4- 6 in.	25.00
<b>BLACK HILL SPRUCE</b>	
3-yr. Seedlings (3-0) 4-10 in.	35.00
<b>COLORADO BLUE SPRUCE</b>	
3-yr. Seedlings (3-0) 3- 5 in.	45.00
<b>NORWAY SPRUCE</b>	
3-yr. Seedlings (3-0) 3- 6 in.	30.00
<b>WHITE SPRUCE</b>	
3-yr. Seedlings (3-0) 4- 8 in.	30.00

### \*WHITE PINE

White Pine may be shipped into all states (and the District of Columbia) except Arizona, Colorado, Nevada, New Mexico, Utah and California.

## GUARANTEE..

We guarantee that 90% of the Transplants you buy from this Price List will live. If you will notify us before October 1, 1955, of the number over 10% which do not live, replacement will be made to equal 90% of the number originally purchased. If we are unable to furnish replacements in the exact size originally purchased, we will furnish them in the nearest size and variety. Shipments will be made by express collect or C.O.D. for postage. Trees shipped by freight or truck cannot be guaranteed.

*Harry Eastman*

## ORDER NOW for FALL!

The Fall planting season is a good time in which to establish your Maine-Grown, Guaranteed-To-Live Evergreens. At this time of year, your Trees have had a summer's growth behind them — and are in better condition to get their roots firmly anchored for fast, sturdy growth the following spring. We begin to ship your Transplanted Trees around the first of September and continue until the middle of November. The fall "digging season" is but a few weeks up here in Fryeburg. Be sure you receive the varieties you want in time for fall planting. **ORDER EARLY — NOW** and Save Money and Growing time! See how to order below!

## SHIPPING WEIGHTS

The following shipping weights are approximate due to the different varieties. Weight per thousand trees, including packing material and crates, will average as follows: 2-year seedlings, 7 lbs.; 3-year seedlings, 15 lbs.; 3-year transplants, 28 lbs.; 4-year transplants, 80 lbs.; 5-year transplants, 200 lbs.; 6-year transplants, 200-300 lbs. All trees shipped by express unless otherwise specified. Trees shipped by freight are not covered by our Guarantee.

## TERMS

Cash with order, or one half cash with order, balance C.O.D. All prices F.O.B. Fryeburg, Maine, net; no discounts. 250 trees of any one kind and size at the 1000 rate. For less than 250 of one kind ask for retail price list. No extra charge for Boxes or Packing.

Please Give Second and Third

Choices On All Orders

Use Handy Order Form!



Black Hill Spruce

# WESTERN MAINE FOREST NURSERY CO., FRYEBURG, MAINE



MAKE MORE MONEY

... FILL THE BIG

**DEMAND**

for

## CHRISTMAS TREES

Growing and selling Christmas Trees is by far one of the most profitable investments you can make. With very little labor or cultivation, you can easily increase your income from several hundred to several thousands of dollars every Christmas season. As little as an acre of **waste** or **marginal** land will yield from 3000 to 4000 handsome foliaged Western Maine Christmas Trees. Your first cost — of only **pennies** a tree — is your last cost which brings your gross profit to better than 500% over your cost price. More than 30 million Christmas Trees are in demand every season — at the sale price of at least \$1.00 to \$5.00 a tree. You can take advantage of this highly profitable, no labor opportunity NOW. Write TODAY for your FREE CHRISTMAS TREE BULLETIN that gives you the interesting facts about this very lucrative enterprise. It will help you to realize bigger profits every year!

### SCIENTIFICALLY DESIGNED SPADE SAVES HOURS PLANTING TIME

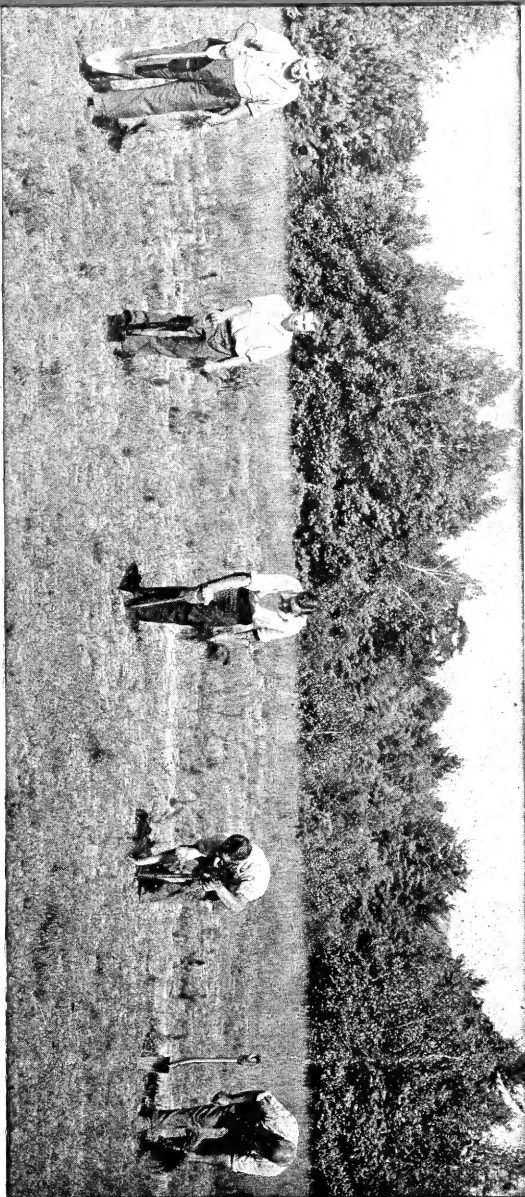
Now Only \$7.50 Each



This professionally designed planting tool is the one we use at our Nursery in Fryeburg. An able man can easily plant at least 1000 trees a day with it. Each tool has just the proper weight and balance for every planting job. It is sturdily constructed to last for many years. Order several right away at this **LOW FALL PRICE**. They'll save you many hours of planting time!

The illustrations at left show the proper planting technique. (Also see photo). Insert spade straight into the ground. Pull handle back and push forward to form opening for the tree back of spade. Spread out the roots. Close opening by stamping the soil with heel.

Tool is shipped F.O.B. FRYEBURG unless otherwise specified.



Proper planting technique: First man with trees in left hand and shovel in right is ready to make the hole. Second man is inserting shovel straight into the ground. Third man has inserted shovel and has handle pushed ahead, forming opening for tree back of shovel. Fourth man, while keeping shovel pushed ahead with his foot, has taken one tree from the bundle carried in his left hand and is putting it in hole. Fifth man has removed shovel and is closing opening by stamping each side with his heel. On cleared land such as shown here, one trained man can easily plant 1000 trees a day.

**Western Maine Forest Nursery Co.**  
Fryeburg, Maine